

ORIGINAL ARTICLE

George Emmanuel S.J. Comia, MD¹
Margarita Lat-Luna, MD¹
Manuel B. Agulto, MD^{1,2}

¹*Department of Ophthalmology and Visual Sciences
University of the Philippines–Philippine General Hospital
Manila, Philippines*

²*Institute of Ophthalmology
National Institutes of Health
University of the Philippines
Manila, Philippines*

Fluorophotometric measurements of aqueous-humor flow in Filipino eyes

ABSTRACT

Objective

This study determined the rate of aqueous-humor flow in Filipino eyes.

Methods

Patients were recruited from the outpatient eye clinic of the Philippine General Hospital. All underwent a complete eye evaluation, gonioscopy, dilated-fundus examination, ultrasonic pachymetry, and fluorophotometry. After instillation of 2% fluorescein dye into the eye, three scans were made on each eye every 30 minutes for 2 hours and the rate of aqueous-humor flow was determined. Kruskal-Wallis analysis of variance was used to determine variation of aqueous-humor flow across age groups. Pearson correlation was used to determine association between ocular parameters.

Results

A total of 74 eyes (37 patients) were included in the study. The mean age of the participants was 46.6 years \pm 11.1 years. The mean rate of aqueous-humor flow was 2.78 \pm 0.27 mL/min and this was not affected by the eye assessed ($p = 0.77$), sex ($p = 0.19$), nor age expressed as decades ($p = 0.084$). Aqueous-humor flow was directly and fairly correlated with anterior-chamber volume and depth ($r = 0.35$, $p = 0.002$ and $r = 0.36$, $p = 0.002$) respectively. Aqueous-outflow facility was inversely and fairly correlated with pachymetry ($r = -0.32$, $p = 0.006$).

Conclusions

The rates of aqueous-humor flow in Filipino eyes were similar to those reported in the literature. There is direct but fair correlation of the aqueous-humor flow with anterior-chamber depth and volume.

Keywords: Fluorophotometry, Fluorophotometer, Aqueous-humor flow, Aqueous-outflow facility

Correspondence to:

George Emmanuel S.J. Comia, MD
Department of Ophthalmology and Visual Sciences
University of the Philippines–Philippine General Hospital
Taft Avenue, Ermita
1000 Manila, Philippines
Telephone : +63-2-3022488
Fax : +63-2-3022491
Email : georgecomia@yahoo.com

No financial assistance was received for this study.

The authors have no proprietary or financial interest in any product used or cited in this study.

AQUEOUS humor is the clear liquid of the anterior and posterior chambers that inflates the globe and maintains adequate intraocular pressure (IOP); provides nutrition for the lens, cornea, and trabecular meshwork; and facilitates cellular and immune responses. It is formed by the nonpigmented epithelium of the ciliary processes by three mechanisms: diffusion, active secretion, and ultrafiltration.¹ The rate of formation is affected by the integrity of the blood–aqueous barrier, blood flow to the ciliary body, and neurohormonal regulation, and has been said to vary diurnally and drop during sleep. It also decreases with age.^{2,3}

The rate of flow of the aqueous humor through the anterior chamber is one of the major determinants of IOP.^{1,2,3} This rate can be measured using a fluorophotometer.

Fluorophotometry is a noninvasive method of determining the concentration of fluorescent tracers (fluorescein dye) in living ocular tissues.¹ Fluorescein may be administered intravenously or topically. These are fundamental to measuring aqueous flow inside the eye.² In the Philippines, the only fluorophotometer machine available is the Ocumetrics Fluorotron™ Master (Ocumetrics Inc., Mountain View, CA, USA). It was originally designed to measure the leakage of fluorescein dye from the retina into the vitreous in a similar fashion that fluorescein angiography photographs this leakage. This product has now been further developed for eye research involving the anterior segment. The Fluorotron™ Master comes with a special computer algorithm for subtracting background and vascular fluorescence so that only penetrated fluorescein is measured. It also utilizes various mathematical algorithms, such as the Yablonski principle, to determine endothelial permeability and aqueous flow. Coupled with IOP readings, this information can be used to determine aqueous-outflow facility.

The barrier between the blood system and the anterior segment of the eye is not tight, as some fluorescein can penetrate it even under normal conditions. However, since the Fluorotron™ Master can make a precise measurement of the amount of fluorescein that gets in, it can easily differentiate a normal amount from an abnormally high amount.

Aqueous flow can be determined by instilling the cul-de-sac with 2% fluorescein.^{1,2} This dye is safe and has no adverse effects to the function of the eye when used topically. It distributes itself evenly into the depths of the cornea within 15 to 20 minutes. After 2 to 3 hours, the concentration of fluorescein in the cornea falls as the concentration in the anterior chamber rises. The dye leaves the cornea by diffusion through the endothelium.^{1,4,5} After this period, the concentrations fall in a very constant manner. The Fluorotron™ Master automatically calculates

these values to determine aqueous flow.

The most common risk factor in glaucoma is IOP, which is determined by aqueous-flow rate, aqueous-outflow rate, and episcleral venous pressure. Understanding these factors that determine IOP could lead to a better understanding of the disease. In a study by Bloom and associates, differences in aqueous flow in adult eyes between races (white and black) were noted.³ No reports, however, were published examining the aqueous-humor flow in Asian eyes.

This study determined the rate of aqueous-humor flow in Filipino eyes using the Ocumetrics Fluorotron™ Master fluorophotometer. Factors associated with aqueous humor flow and aqueous outflow were determined.

METHODOLOGY

This study was conducted at the Sentro Oftalmologico Jose Rizal of the University of the Philippines–Philippine General Hospital in accordance with the guidelines set by the Declaration of Helsinki. Informed consent was obtained from all the subjects after a thorough explanation of the nature and possible risks and benefits of the study.

Subjects were recruited from the Outpatient Eye Clinic of the Department of Ophthalmology and Visual Sciences between January 2007 to October 2007. Patients 18 years and older who were seen at the outpatient clinic underwent basic ophthalmologic evaluation, including collection of demographic data; ocular, medical, surgical, and medication history; applanation tonometry (Haag-Streit); slitlamp biomicroscopy of the anterior segment; stereoscopic funduscopy; and gonioscopy employing standard methodology. Excluded were patients with glaucoma; ocular hypertension or an IOP response to steroids; diabetes mellitus; thyroid-related eye disease; intraocular infection; meibomian-gland dysfunction; dysfunctional-tear syndrome; lid abnormalities or diseases; uveitis; retinal pathology; corneal abnormalities such as neovascularization, opacities, or dystrophies; history of trauma or those who wore contact lenses or had undergone any form of intraocular laser and incisional surgery.

Those who fulfilled the inclusion criteria underwent additional examinations such as ultrasonic pachymetry (Pocket II, Quantel Medical, France), A-scan (OTI Scan 1000, Ophthalmic Technologies Incorporated, Canada), dilated-fundus examination using an indirect ophthalmoscope (Keeler Vantage), and fluorophotometry (Fluorotron Master) performed in the morning. Two-percent fluorescein dye (Fluorets, Chaurvin Pharmaceuticals, England) was instilled on the cul-de-sac three times, three drops every five minutes. The eye was washed with balanced saline solution 15 minutes later to remove

the excess fluorescein. To ensure that the fluorescein in the anterior chamber was in steady state with the cornea, fluorophotometric scans were made 4 hours after instillation of fluorescein. Three scans were made on each eye every 30 minutes for 2 hours. Data were collated using the fluorophotometer to arrive at a specific rate of aqueous flow and, with the determined IOP, the aqueous-outflow facility as well.

The following outcome measures were recorded: age, sex, IOP, central corneal thickness, anterior-chamber (AC) depth, anterior-chamber volume, rate of aqueous flow, and aqueous-outflow facility.

Descriptive statistics including mean, standard deviation for continuous variables, and percentage frequency distribution for categorical data were obtained. Nonparametric Kruskal-Wallis analysis of variance was used to determine the variation of aqueous-humor flow across specified age groups due to the skewed age stratification. Statistical correlation between continuous variables was performed using Pearson moment product correlation (r): $0 - 0.25$ (or -0.25) = little or no relationship, $0.25 - 0.50$ (or -0.25 to -0.5) = fair relationship, $0.50 - 0.75$ (or -0.50 to -0.75) = moderate to good, and > 0.75 (or -0.75) = very good to excellent relationship. All tests of significance were pegged at 0.05 alpha level of significance, 95% confidence interval, using Statistica version 1999.

RESULTS

Out of 957 patients examined, 37 were included in the study. A total of 74 eyes underwent fluorophotometry. The mean age of the study population was 46.6 ± 11.1 years (range 19 to 69), with the fourth decade having the most common cluster (26 cases or 35%), followed by the fifth decade (24 cases or 32%), third decade (10 cases or 13.5%), and the sixth decade (6 cases or 8%). There were more females (40) than males (34).

An equal representation of both eyes was seen. The different ocular parameters are shown in Table 1. The mean rate of aqueous-humor flow was 2.78 ± 0.27 $\mu\text{L}/\text{min}$. Figure 1 shows an almost symmetric normal curve. The rates did not vary with the eye assessed nor with gender (Table 2). Similarly, no significant variation was noted with the flow rate across the decades of life represented (Table 2).

Among all variables analyzed, a positive but fair relationship was seen with aqueous-humor flow and AC volume and depth ($r = 0.35$, $p = 0.002$ and $r = 0.36$, $p = 0.002$) respectively. No statistical association was noted with pachymetry and age (Table 3).

Aqueous-outflow facility was inversely and fairly correlated with pachymetry. ($r = -0.32$, $p = 0.006$). No association was noted with age and AC volume and depth (Table 4).

Table 1. Ocular parameters of the study population.

Characteristic	Frequency (n=74)
Eye examined	
OD	37
OS	37
Intraocular Pressure (mmHg)	
Mean \pm SD	12.8 ± 2.4
Range	9 – 18
Pachymetry (μm)	
Mean \pm SD	530.7 ± 27.8
Range	466 – 592
Anterior-Chamber Depth (mm)	
Mean \pm SD	3.1 ± 0.36
Range	2.01 – 3.78
Anterior-Chamber Volume (μL)	
Mean \pm SD	209 ± 44.3
Range	93 – 302.4
Rate of Aqueous Flow ($\mu\text{L}/\text{min}$)	
Mean \pm SD	2.78 ± 0.27
Range	2.01 – 3.43
Aqueous Outflow Facility ($\mu\text{L}/\text{min}$)	
Mean \pm SD	0.74 ± 0.38
Range	0.25 – 2.16

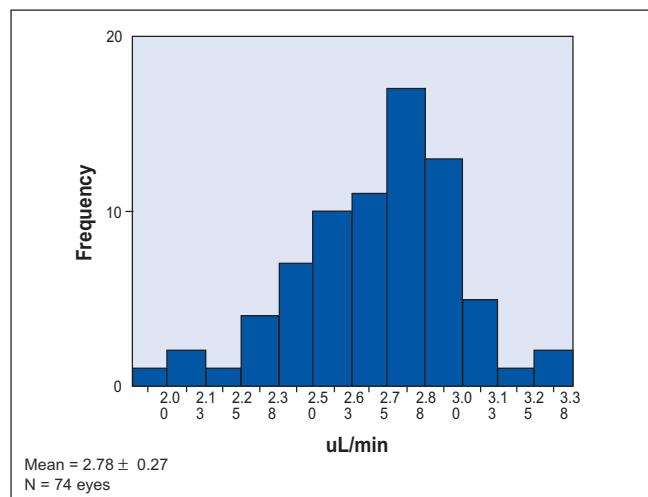


Figure 1. Histogram of the aqueous-flow rate of the study population.

DISCUSSION

Fluorophotometry is a noninvasive method of determining the concentration of fluorescent tracers in living ocular tissues.¹ With the use of fluorescein as a tracer administered topically to the eye, aqueous-humor flow can be measured.

Aqueous-humor flow has been said to peak in the morning, slightly decrease in the afternoon, and is lowest during sleep. These changes throughout the day reflect a biologic pattern. The mean rate of aqueous-humor flow between 8 in the morning and noon is 2.97 ± 0.77 $\mu\text{L}/\text{min}$. The normal rate is 1.5 to 4.5 $\mu\text{L}/\text{min}$.⁶ In this study,

Table 2. Comparison of fluorophotometric measurements of aqueous-humor flow rate across different parameters.

Characteristic	Mean	p
Eye examined		
OD (n=37)	2.77 ± 0.26	0.77 ¹
OS (n=37)	2.79 ± 0.28	
Sex		
Male (n=34)	2.82 ± 0.32	0.19 ¹
Female (n=40)	2.74 ± 0.22	
Age (Decade)		
20 th (n=8)	2.80 ± 0.12	0.084 ²
30 th (n=10)	2.88 ± 0.11	
40 th (n=26)	2.74 ± 0.31	
50 th (n=24)	2.84 ± 0.29	
60 th (n=6)	2.54 ± 0.23	

Significant difference if p-value is <0.05

¹Independent T-test

²Kruskal-Wallis ANOVA

Table 3. Correlation matrix of aqueous-humor flow rate and other ocular measurements.

Aqueous-Humor Flow with	Correlation Coefficient (r)	p	Comment
Anterior-Chamber Volume	0.35	0.002	Positive, fair
Anterior-Chamber Depth	0.36	0.002	Positive, fair
Pachymetry	-0.016	0.89	No association
Age	-0.089	0.45	No association

Significant association if p value is <0.05.

Table 4. Correlation matrix of aqueous-outflow facility and other ocular measurements.

Aqueous Outflow Facility With	Correlation Coefficient (r)	p	Comment
Anterior Chamber Volume	-.23	0.05	No association
Anterior Chamber Depth	-.23	0.05	No association
Pachymetry	-.32	0.006	Inverse, fair
Age	-.079	0.50	No association

Significant association if p value is <0.05.

the rate of aqueous-humor flow was $2.78 \pm 0.27 \mu\text{L}/\text{min}$, which lies within the normal range.

Several factors influence aqueous-humor flow. Systemic disease such as diabetes mellitus and ocular diseases such as inflammation and retinal detachment reduce flow. With aging, there is usually a decline in aqueous-humor production at about 2.4 to 3.2% per decade after age 10 years.⁶ Van Best and coworkers noted a 0.5% decrease of

volume per year of age. In this study, no decrease was noted when the results were grouped per decade. There was no significant variation between decades as well.

Gender difference in aqueous-humor flow rate may be due to small differences in ocular structures, wherein females appear to have a trend of lower flow.^{6, 8} In this study, the difference in flow rates between males and females was not statistically significant.

AC depth and volume have been described by Bloom and associates as having a direct correlation with aqueous-flow rate.³ They have also described an inverse relationship between age and AC volume possibly because of an increase in the size of the lens as new lens fibers develop throughout life.⁷ This study showed only a fair positive correlation of AC volume and depth with aqueous-humor flow. No correlation was noted with age. This may be due to the small sample and the skewed distribution in the age groups.

In conclusion, the rates of aqueous humor flow ($2.78 \pm 0.27 \text{ mL}/\text{min}$) among normal Filipinos eyes were similar to those reported in the literature. There was fair correlation of the aqueous-humor flow with AC depth and volume but not with age and gender. A larger sample size may provide a stronger correlation between these factors.

References

1. Brubaker RF. Measurement of aqueous flow by fluorophotometry. In: Ritch R and Shields MB. *The Glaucomas*: Basic Sciences, 2nd. ed. St. Louis: Mosby, 1996; VI, chap 22: 447-454.
2. Bloom JN, Levene RZ, Thomas G, Kimura R. Fluorophotometry and the rate of aqueous flow in man: instrumentation and normal values. *Arch Ophthalmol* 1976; 94: 435-443.
3. Brubaker RF, Nagataki S, Townsend DJ, et al. The effect of age on aqueous-humor formation in man. *Ophthalmology* 1981; 88: 283-288.
4. Yablonski ME, Zimmerman TJ, Waltman S, Becker B. A fluorophotometric study of the effects of topical timolol on aqueous-humor dynamics. *Exp Eye Res* 1978; 27: 135-142.
5. Brubaker RF. The flow of aqueous humor in the human eye. *Tr Am Ophthalmol Soc* 1982; 80: 391-474.
6. Van Best J, Diestelhorst M, Leite E, et al. Corneal endothelial permeability and aqueous-humor flow using a standard protocol. *Graefes Arch Clin Exp Ophthalmol* 1995; 233: 582-591.
7. Allingham R, Damji K, Freedman S, et al. Cellular and molecular biology of aqueous-humor dynamics. In: *Shield's Textbook of Glaucoma*, 5th ed. Philadelphia: Lippincott Williams and Wilkins, 2005; chap.1: 5-35.
8. Brubaker RF, McLaren JW. Uses of fluorophotometry in glaucoma research. *Ophthalmology* 1985; 92: 884-890.
9. Linden C, Alm A. Effect of consecutively applied fluorescein eye drops on corneal and aqueous concentrations of fluorescein. *Ophthalmic Res* 1997; 29: 57-60.
10. Maus TL, Brubaker RF. Measurement of aqueous-humor flow by fluorophotometry in the presence of a dilated pupil. *Invest Ophthalmol Vis Sci* 1999; 40: 542-546.
11. Toris CB, Yablonski ME, Wang YL, Camras CB. Aqueous-humor dynamics in the aging human eye. *Am J Ophthalmol* 1999; 127: 407-12.